

PROJECT 3: BODY IMAGE

*Madison Jorge
Professor Szatmary
Design 102*

WHAT DO I WANT TO HIDE?

- My eyes, to prevent myself from seeing the bad in the world

WHAT DO I WANT TO PROTECT?

- My chest where my heart lies because it depicts life and how we feel.

WHAT DO I WANT TO HIGHLIGHT?

- My curves because as a woman, we are easily judged by our bodies.

WHAT DO I WANT TO EXAGGERATE?

- Similar to highlighting my curves, I would exaggerate them and play with proportions (similar to my photos)



WEARABLE ART

CLAIRE PREBBLE

The mask was made from shredded and dyed flax to signify the night sky. It is braided into korus.

The sterling silver stars represent the Matariki constellation.

The mask is a fitting place to attach the stars as Matariki translated means - Mata Riki (Tiny Eyes) and Mata Ariki (Eyes of God).

Either way, the eyes are thought to watch over the land and it's people.



Created from hard-coated tulle, silk and hard-coated steel wire.

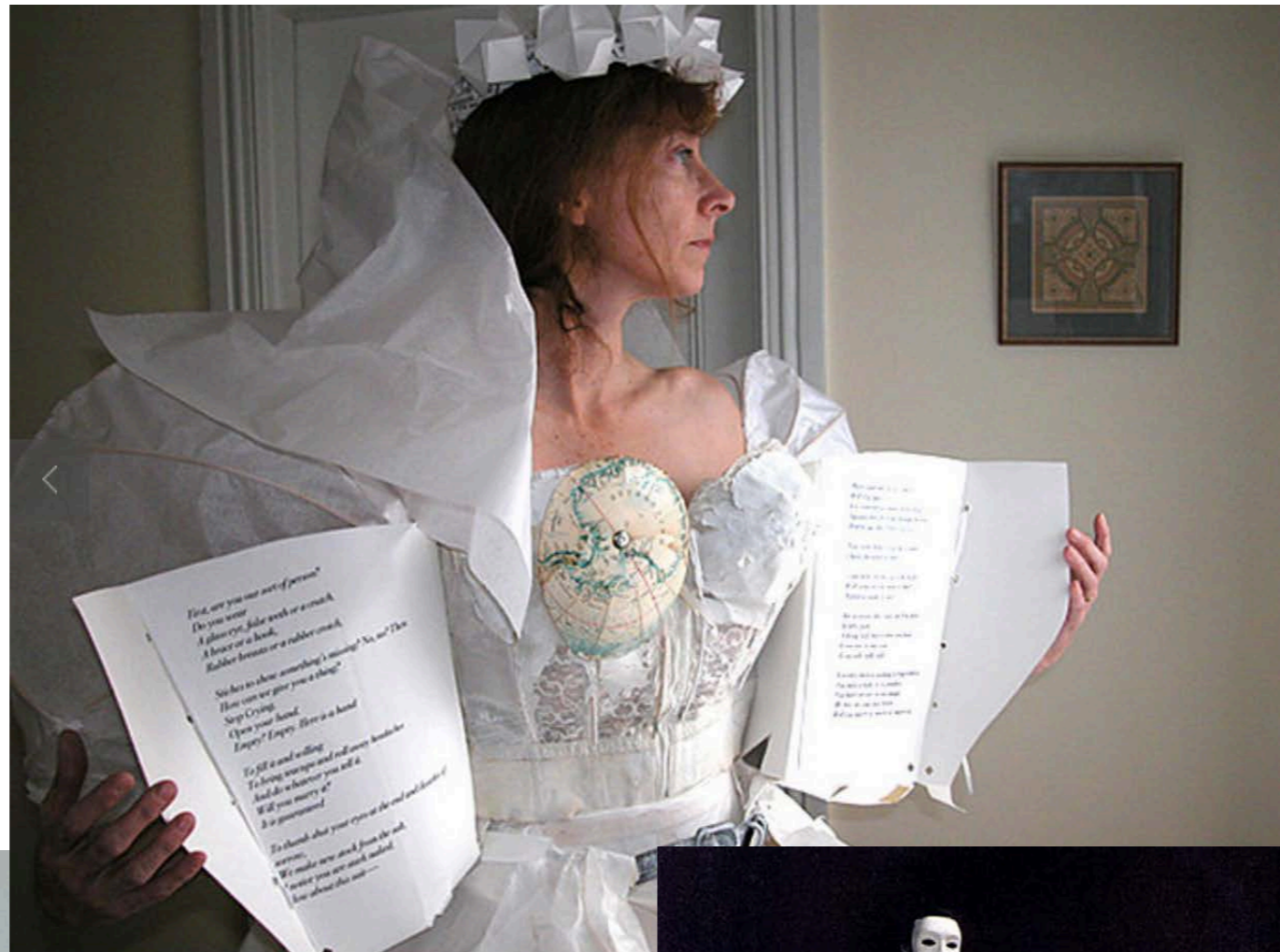
E.O.S. is an abbreviation for Evolution of Spirit.
Eos is the all seeing Greek goddess of the dawn a very fitting theme as Claire often worked all night until dawn stitching, plaiting and sewing sterling silver wire, beads and silk to create this piece.



<http://claireprebble.com/WEARABLE-ART>

KATHY BRUCE: WEARABLE ART

[https://
www.kathybruce
artist.com/
paper](https://www.kathybruceartist.com/paper)



Naked as Paper 2004
Wheaton Collage, MA

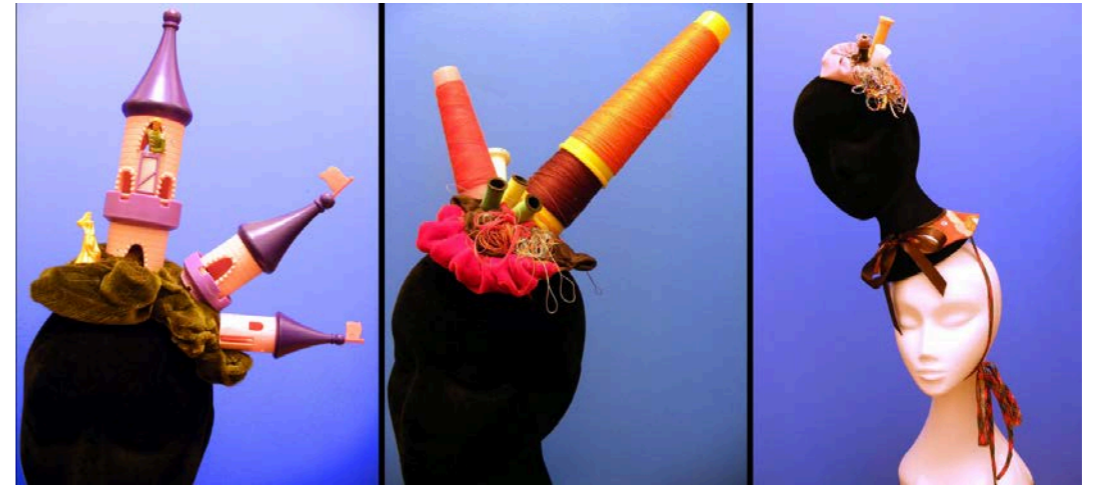


Army to Ardvark 2013
Central Booking Gallery, NYC



Foldings 1996
Lafayette College, PA and
CUNY New York City

R. R. PASCOE



<https://rrpascoeart.com/galleries/design/>

MATERIALS

KATHY BRUCE: PAPER COLLAGES



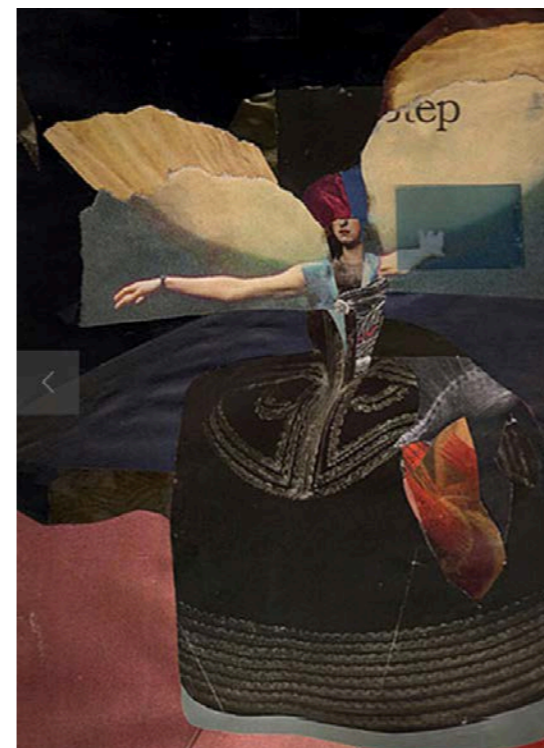
Adaptive Behavior 2014
From "Tapadas, Saints and
other Heroines"



Women, Nature &
Evolution Series 2016
30" x 22"



Peripheral Influences 2013
From "Tapadas, Saints and
other Heroines"



Winged Menina 2012
From "Tapadas, Saints and
other Heroines"

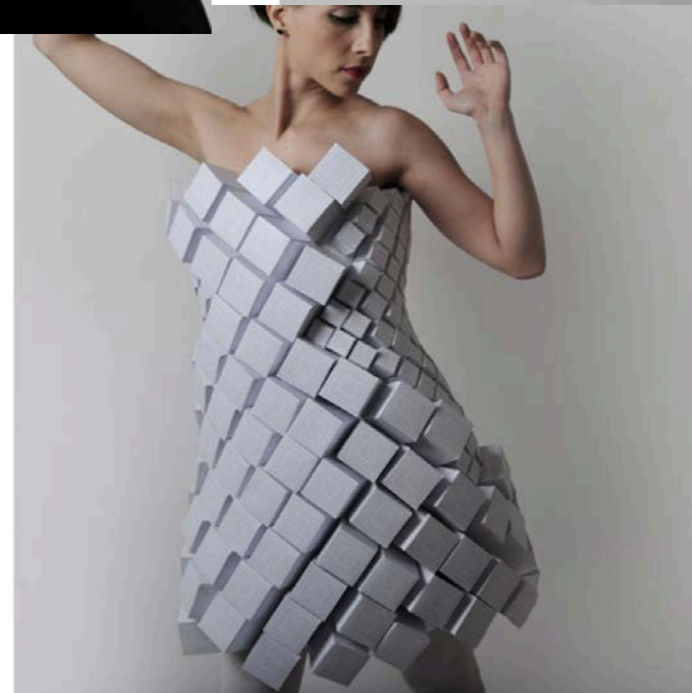
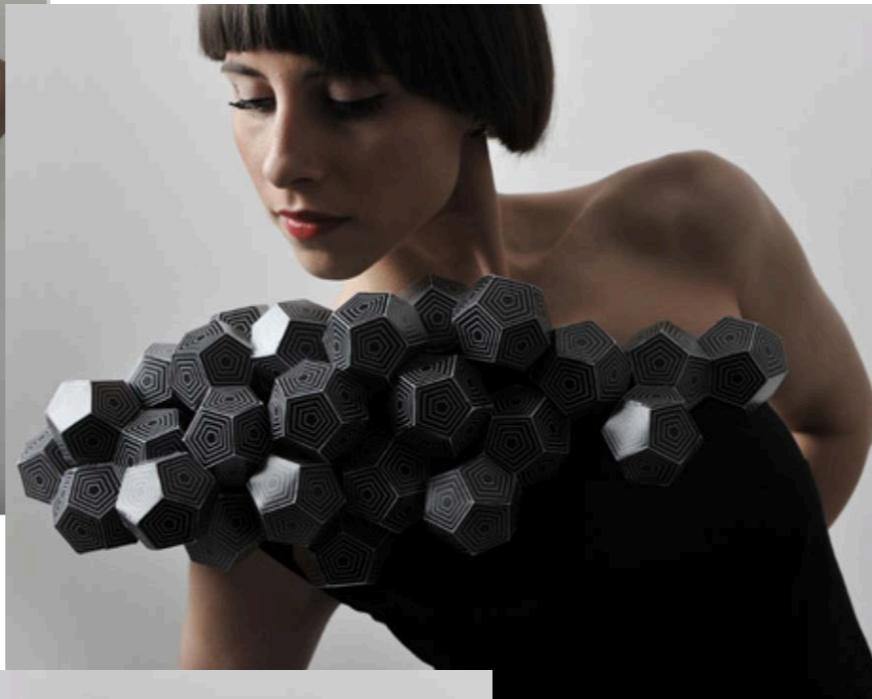
AMILA HRUSTIC: GEOMETRIC SHAPES

Plato's Collection

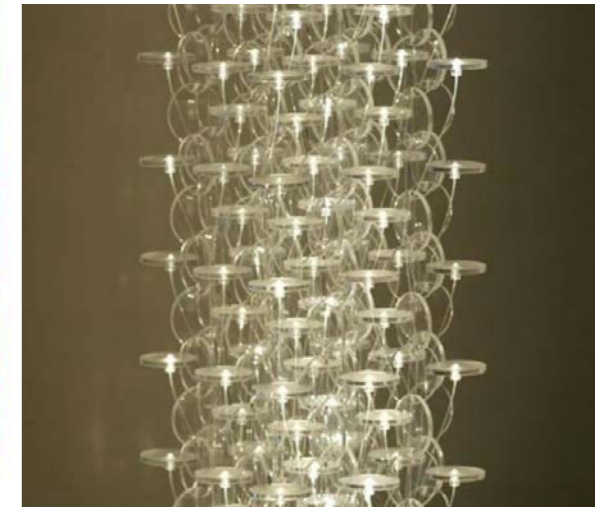
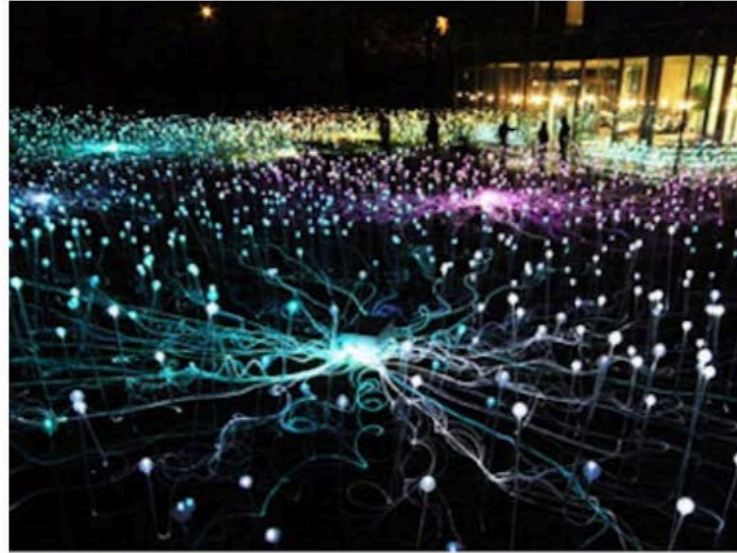
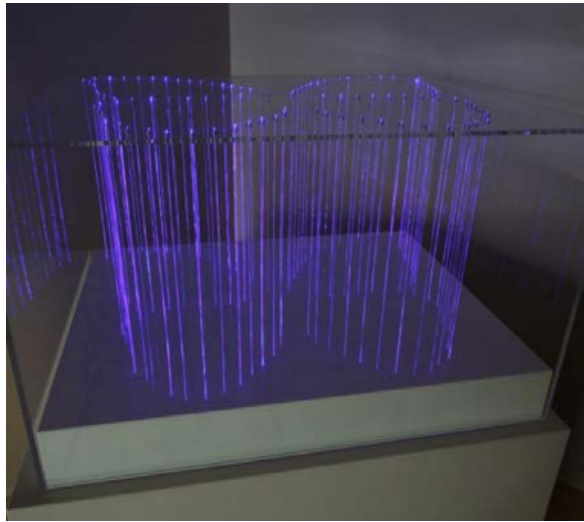
"Geometry existed before the creation" - Plato

The title of this diploma project is "Plato's Collection" and the main inspiration for the entire Collection is located in Platonic solids. The collection consists of five unique dresses handcrafted from a combination of textiles and paper.

The Plato Collection is inspired by the five different Platonic solids - tetrahedron, cube, octahedron, dodecahedron and icosahedron, which are recreated in paper and attached to fabric in different configurations.



BRUCE MUNRO



Bruce Munro is an installation artist with a penchant for light. He is known for his immersive, large-scale **installations** inspired by "music, literature, science, and the world around him." These pieces range from suspended, chandelier-like works to stunning sculptures installed on the floor, grass, and even the surface of water.

<http://www.brucemunro.co.uk/work/sculptures/>

Riusuke Fukahori

Resin. This is **not a photograph** of fish swimming in a barrel. It is a **3D sculpture** of fish swimming in a barrel, recreated layer by layer in resin, a product of the genius that is Riusuke Fukahori. Each layer will be poured in, dried, painted on, and the **process will be repeated** until the full 3D painting is finished. (Image Source: [Riusuke Fukahori](#))



<https://www.artsy.net/artist/riusuke-fukahori>

DRAWINGS/ INSPIRATION



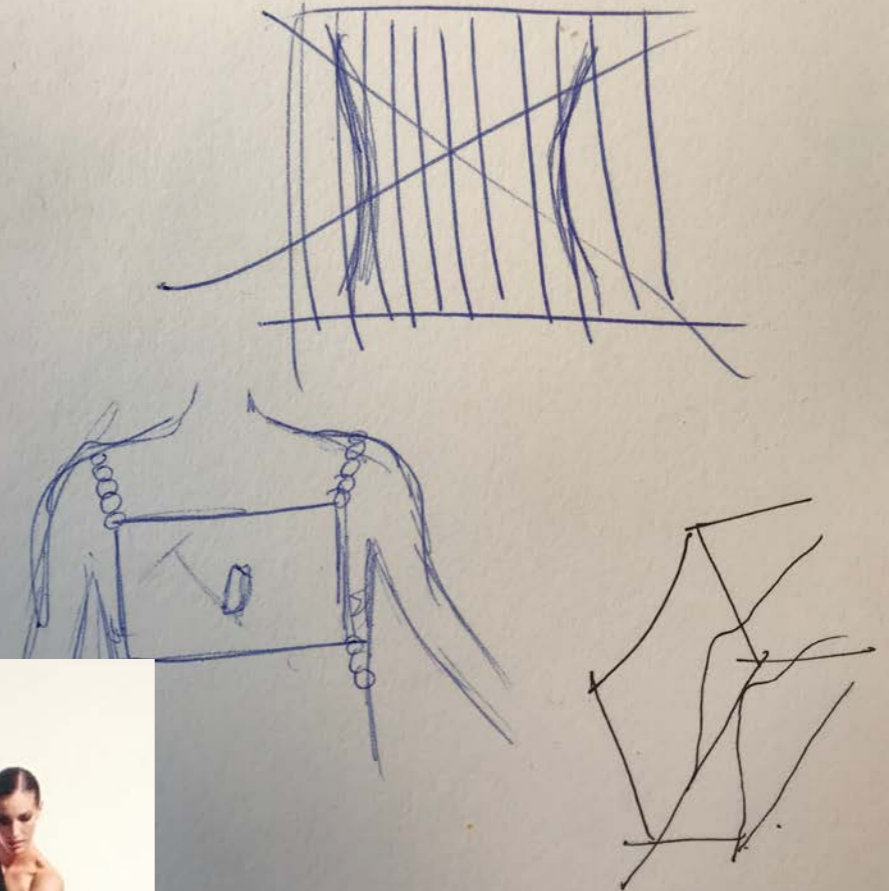
PROJECT 3

HIGHLIGHT CURVES
OR
EXAGGERATE

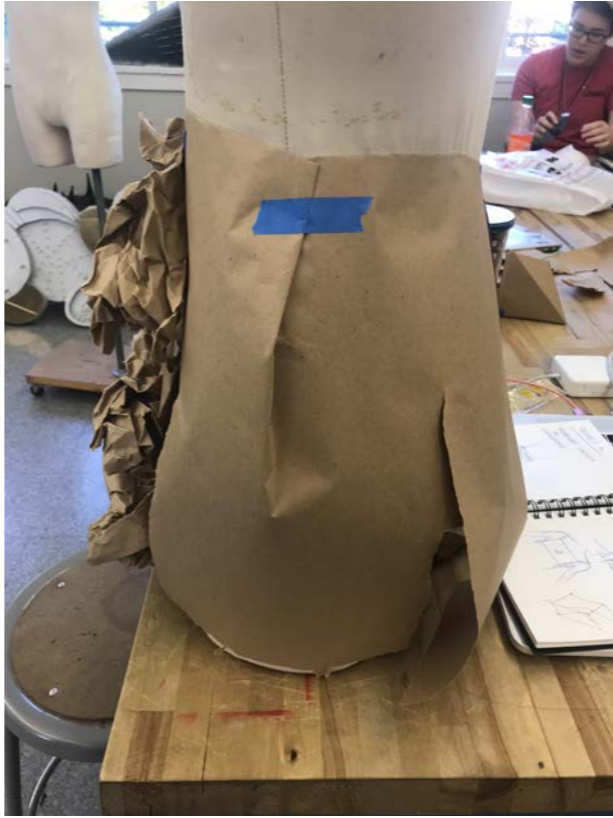
GLOVES → *exaggerate curves
exaggerate curves
exaggerate curves*

PROJECT 3

PROTECT CHEST -
THINGS I HOLD DEAR TO MY HEART



MOCK UP IDEAS



MATERIAL EXPERIMENTATION



The top I came up with had to be abandoned because the first layer did not come out of the mold correctly.





CONSTRUCTION PROCESS



FINAL OUTCOME

